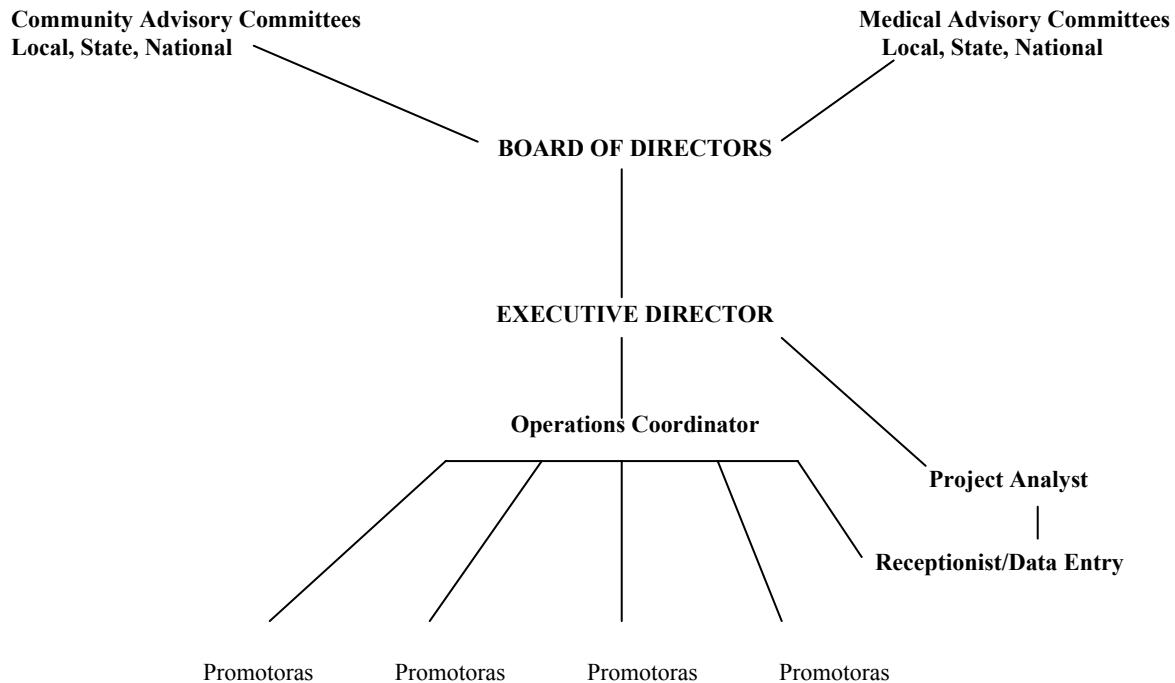


# ORGANIZATIONAL CHART

**Organizational Philosophy:** In order to ensure that capacity is created and sustained in the community, the Board of Directors is comprised of health care consumers, community leaders, and promotoras who have the responsibility of making policy decisions regarding the direction, goals and objectives to be achieved by staff. The Board is advised by an extensive network of community and medical advisory committees on a local, state and national level who meet biannually to advise and make recommendations to the Board. The Board is considered to be the nucleus and central to the operation of the Institute, whereas the committees are advisors to the nucleus.



<b>Tobacco Lifestyle Exercise</b>	<b>Cardiovascular Health Hygiene Nutrition</b>	<b>Health Safety Depression</b>	<b>Cancer Substance Abuse Community Health Leadership</b>	<b>Diabetes Prevention</b>	<b>Environmental Health Reproductive Health</b>	<b>Healthy Parenthood</b>
-----------------------------------	--	---------------------------------	---	----------------------------	---	---------------------------

Subcontract:      Accountant                  Legal                  Independent Auditor